

Memilih Pita yang Tepat

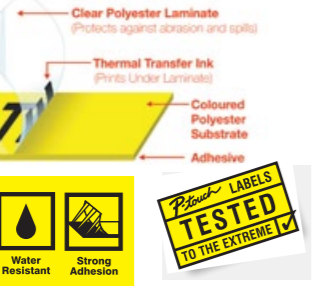
P-touch menawarkan bermacam-macam jenis, ukuran, dan warna pita. Aplikasi dan jenis P-touch pilihan anda disesuaikan dengan jenis pita tertentu. Informasi berikut dapat menuntun anda dalam memilih pita yang tepat

Jenis Pita	Laminasi	Perekat	Aplikasi
Standart Laminated Tape	Ya	Standar	<ul style="list-style-type: none"> Baik untuk digunakan di indoor ataupun outdoor File folder Label laci Signage kecil Nama rencana
Flexible Identification Tape	Ya	Khusus untuk menempel, melaminasi, atau untuk perekat pita itu sendiri	<ul style="list-style-type: none"> Membungkus / memberi label pada kawat dan kabel Lekukan tajam Permukaan silinder Pipa PVC Saluran Signage kecil Batang/balok Tabung
Matt Silver Tape	Ya	Standar	<ul style="list-style-type: none"> Label aset untuk komputer perusahaan, alat-alat, dan mesin penjual Sign board Stiker jendela File folder
Tamper Evident Tape	Ya	Tamper-evident (berfungsi sebagai segel keamanan).	<ul style="list-style-type: none"> Menandai properti Manajemen asset Label bar-code Kunci truk / van Alat-alat perusahaan Batch coding Name badges
Strong Adhesive Tape	Ya	Kekuatan ekstra lebih dari 2x lipat perekat standar	<ul style="list-style-type: none"> Permukaan kasar, bertekstur, tidak rata Permukaan logam yang licin / bercat Permukaan yang ditipisi bubuk / bedak Papan tempelan Lemari / kabinet Tanaman / pot

Laminated "TZ" Tape Construction



Laminated Tape Structure



Brother Printer Label menciptakan label perekat berlaminasi yang tahan lama dan yang tahan terhadap air, bahan kimia, abrasi, memudar, dan suhu membuat mereka sempurna untuk setiap tempat kerja.

Tabel Perbandingan Pita



TZe Tape Comparison Chart

	6mm	9mm	12mm	18mm	24mm	36mm
Black on Clear	TZ-111	TZ-121	TZ-131	TZ-141	TZ-151	TZ-161
Black on Clear (Matt)	-	-	TZ-M31	-	-	-
Black on White	TZ-211	TZ-221	TZ-231	TZ-241	TZ-251	TZ-261
Black on Red	-	TZ-421	TZ-431	TZ-441	TZ-451	TZ-461
Black on Blue	-	-	TZ-531	TZ-541	TZ-551	TZ-561
Black on Yellow	TZ-611	TZ-621	TZ-631	TZ-641	TZ-651	TZ-661
Black on Green	-	-	TZ-731	TZ-741	TZ-751	-

•Flexible Identification Tapes (8m long) Great for sharp bends and cylindrical surfaces

	6mm	9mm	12mm	18mm	24mm	36mm
Black on White	TZ-FX211	TZ-FX221	TZ-FX231	TZ-FX241	TZ-FX251	TZ-FX261
Black on Yellow	TZ-FX611	TZ-FX621	TZ-FX631	TZ-FX641	TZ-FX651	TZ-FX661

•Matt Silver Tapes (8m long)

	6mm	9mm	12mm	18mm	24mm	36mm
Black on Silver (Matt)	-	-	TZ-M931	TZ-M941	TZ-M951	TZ-M961

•Strong Adhesive Tapes (8m long)

	6mm	9mm	12mm	18mm	24mm	36mm
Black on White	TZ-S211	TZ-S211	TZ-S231	TZ-S241	TZ-S251	TZ-S261
Black on Yellow	-	TZ-S621	TZ-S631	TZ-S641	TZ-S651	TZ-S661
Black on Silver (Matt)	-	-	-	TZ-SM941	TZ-SM951	TZ-SM961

•Temper evident tape (8m long) (TZ-SE4)
 •Iron on fabric Tapes (3m long) (TZ-FA3)



DK Roll Comparison Chart

Paper labels	Reorder No.	Size (mm)	Colour	Sheets
Standard Address Labels	DK11201	29mmx90mm	Black on White	400
Large Address Labels	DK11208	38mmx90mm	Black on White	400
Small Address Labels	DK11209	29mmx62mm	Black on White	800
Shipping Labels	DK11202	62mmx100mm	Black on White	300
File Folder Labels	DK11203	17mmx87mm	Black on White	300
Multi Purpose Labels	DK11204	17mmx54mm	Black on White	400
Square Paper Labels	DK11221	23mmx23mm	Black on White	1200



	12mm	29mm	62mm	102mm
--	------	------	------	-------

(QL-1050/1060N only)

•Continuous Length Paper Tape (30.48m long)

	12mm	29mm	62mm	102mm
Black on White	DK-22214	DK-22210	DK-22205	DK-22243

•Continuous Length Removable Paper Tape (30.48m long)

	12mm	29mm	62mm	102mm
Black on White	-	-	DK-44205	-
Black on Yellow	-	-	DK-44605	-

•Continuous Length Film Tape (15.24m long)

	12mm	29mm	62mm	102mm
Black on White	-	DK-22211	DK-22212	-
Black on Yellow	-	-	DK-22606	-



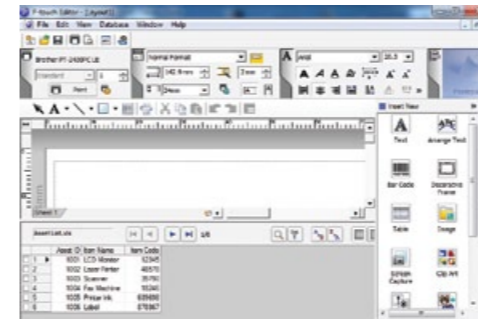
M Tape Comparison Chart

	6mm	9mm	12mm	18mm	24mm	36mm
Black on Clear	-	-	M-131	-	-	-
Black on White	-	-	M-231	-	-	-
Black on Gold	-	-	M-831	-	-	-
Black on Silver	-	-	M-931	-	-	-
Black on Green	-	-	M-731	-	-	-
Black on Blue	-	-	M-531	-	-	-
Black on Pink	-	-	M-E31	-	-	-
Red on White	-	-	M-K232	-	-	-
Blue on White	-	-	M-K233	-	-	-
Black on Yellow	-	-	M-K231	-	-	-

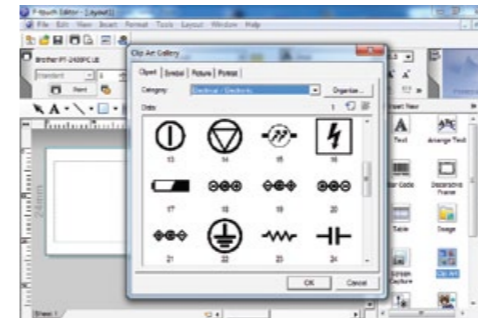


P-Touch editor

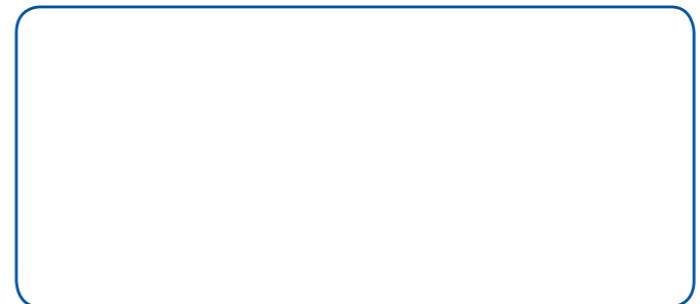
Software P-touch Editor kompatibel dengan desktop model yang terhubung ke PC. Software ini menawarkan berbagai macam pilihan desain dan fungsi untuk mengakomodasi bisnis anda dan memenuhi kebutuhan untuk industri pelabelan. Software ini tersedia untuk Windows® dan Macintosh®.



Software ini dapat dihubungkan dengan database dan memiliki add-in untuk Microsoft Word®, Excel®, dan Outlook®, yang memungkinkan pencetakan label dari aplikasi ini.



Software P-touch Editor sangat berguna dan sangat mudah digunakan. Membuat berbagai teks, gambar, label bar code, atau label lainnya satu per satu atau mencetak banyak label sekaligus.



Solusi Tepat untuk membuat label





Tabel Perbandingan Tipe

Model	PT-90	PT-H105	PT-D200	PT-2030	PT-2730	PT-7600	PT-2430	PT-9700/9800N	QL-700	QL-720NW	QL-1060N
Actual Image											
Keyboard	QWERTY	ABCD	QWERTY	QWERTY	QWERTY	ABCD	N/A	N/A	N/A	N/A	N/A
LCD	12 characters x 1 line	12 char x 1 line	15 char x 1 line Graphical	Graphic (16 characters x 1 guidance and 2 text edit lines)	Graphic (16 characters x 3 line)	132 x 48 dots Graphic Display with Backlight	N/A	N/A	N/A	N/A	N/A
Cutter	Manual	Manual	Manual	Manual	Auto Full Cutter	Manual	Manual, Auto	Auto Full Cutter, Auto Half Cutter	Auto	Auto	Auto
Types of Tape	M Tape (Non-Laminated)	TZe Tape only	TZe Tape only	TZ Tape (Laminated)	TZ Tape (Laminated)	TZ Tape (Laminated)	TZ Tape (Laminated)	TZ Tape (Laminated), HG Tape	DK Label, DK tape	DK Label, DK tape	DK Label, DK tape
Tape Size (mm)	9, 12	3.5, 6, 9, 12mm	3.5, 6, 9, 12mm	3.5, 6, 9, 12, 18mm	3.5, 6, 9, 12, 18 and 24mm	6, 9, 12, 18, 24	3.5, 6, 9, 12, 18, 24	3.5mm-36mm HG tape : 6mm-36mm	up to 62mm	up to 62mm	up to 102mm
Print Speed	7.5mm/s	20mm/s	20mm/s	10mm/s	10mm/s	10mm/s	10mm/s	Maximum. 20mm/sec (TZ tape) Maximum. 80mm/sec (For high-speed mode of HG tape only) Maximum. 80mm/sec (For high-speed draft mode of HG tape only)	150mm per sec (Max)	150mm per sec (Max)	110mm per sec (max)
Print Resolution	203 dpi	180 dpi	180 dpi	180 dpi	180 dpi	180dpi	180dpi	360dpi (TZ tape) 360dpi x 720dpi (For high resolution mode of HG tape only) 360dpi x 180dpi (For high speed mode of HG tape only)	300dpi	300dpi	300dpi
Power Source	4 "AAA" Alkaline Batteries	6 "AAA" size Alkaline Batteries, AC Adapter	6 "AAA" size Alkaline Batteries	6 "AA" Size Alkaline Batteries, AC Adapter (Included)	AC Adapter (Included), 8 "AA" size Alkaline Batteries	AC Adapter (Included), 8 "AA" size Alkaline Batteries	6 "AA" Size Alkaline Batteries	AC adaptor	Power Cables	Power Cables	Power Cables
Connection Type	Standalone use	Standalone use	Standalone use	Standalone use	Standalone use, USB 2.0	Standalone use, USB 2.0 (for transfer template only)	Full Speed USB 2.0	USB 2.0 LAN (for PT-9800PCN only)	USB 2.0	USB 2.0. Wireless (Infrastructure)	USB 2.0 , LAN
Frames	7 Frames	7 Frames	99 Frames	16 Frames	17 Frames	15 Frames	10 Frames (P-Touch Editor Lite), 126 Frames (P-Touch Editor)	126 Frames (P-Touch Editor)	126 Frames (P-Touch Editor)	126 Frames (P-Touch Editor)	126 Frames (P-Touch Editor)
Symbols	173	178	617	253	253	164	All True Type Symbols Installed	All True Type Symbols Installed	All True Type Symbols Installed	All True Type Symbols Installed	All True Type Symbols Installed
Mirror Printing	-	-	-	-	-	Yes	Yes	Yes	Yes	Yes	Yes
Vertical Printing	Yes	Yes	Yes	Yes	Yes	Yes	Yes	Yes	Yes	Yes	Yes
Barcode Printing	No	No	No	Yes*	Yes	Yes*	Yes	Yes	Yes	Yes	Yes
Auto Power Off	Yes	Yes	Yes	Yes	Yes	Yes	Yes	No	No	No	No
Print Preview	Yes	Yes	Yes	Yes	Yes	Yes, only layout preview	Yes	Yes	Yes	Yes	Yes
Repeat Print	Yes, 1-9	Yes, 1-9	Yes, 1-9	Yes, 1-9	Yes, 1-99	Yes, 1-99	2 - 200 (Max)	Yes	Yes	Yes	Yes
Memory	3 x 80 characters	720 chrs (9 areas x 80 chrs)	Yes (30 labels)	1800 chrs (9 areas)	2,800 chrs (99 areas)	2000 characters	No	No	No	No	No
Number of Lines Printable	1 to 2 lines	2 Lines	2 Lines	5 Line	7 Line	1 to 7 lines	Yes (With P-Touch Editor)	Yes (With P-Touch Editor)	Yes (With P-Touch Editor)	Yes (With P-Touch Editor)	Yes (With P-Touch Editor)
Type Styles	Normal, Bold, Outline, Shadow, Vertical, Italic, Italic Bold, Italic Outline, Italic Shadow	Normal, Bold, Outline, Shadow, Vertical, Italic, Italic Bold, Italic Outline, Italic Shadow	Normal, Bold, Outline, Vertical, Italic, Italic Bold, Italic Outline, Italic Shadow	Normal, Bold, Outline, Shadow, Vertical, Italic, Italic Bold, Italic Outline, Italic Shadow	Normal, Bold, Outline, Shadow, Vertical, Italic, Italic Bold, Italic Outline, Italic Shadow	Normal, Bold, Outline, Shadow, Vertical, Italic, Italic Bold, Italic Outline	Bold, Outline, Shadow, Italic, Italic Bold, Italic Outline, Italic Shadow, Underline (With P-Touch Editor Lite), Invert Text Colours (With P-Touch Editor), Frame Out, Surround, Horizontal, Shadow Light	Bold, Outline, Shadow, Italic, Italic Bold, Italic Outline, Italic Shadow, Underline, Invert Text Colours (With P-Touch Editor), Frame Out, Surround, Horizontal, Shadow Light	Editor) Bold, Outline, Shadow, Italic, Italic Bold, Italic Outline, Italic Shadow, Underline, Invert Text Colours (With P-Touch Editor), Frame Out, Surround, Horizontal, Shadow Light	Bold, Outline, Shadow, Italic, Italic Bold, Italic Outline, Italic Shadow, Underline, Invert Text Colours (With P-Touch Editor), Frame Out, Surround, Horizontal, Shadow Light	Bold, Outline, Shadow, Italic, Italic Bold, Italic Outline, Italic Shadow, Underline, Invert Text Colours (With P-Touch Editor), Frame Out, Surround, Horizontal, Shadow Light
Operating System	N/A	N/A	N/A	N/A	Microsoft Windows XP / Windows Vista / Windows 7 / Mac OS X 10.4.11 - 10.8.X	"Windows® 2000 Professional / XP / Windows 7 / Windows 8 / Windows Vista®"	"Microsoft Windows 2000 Professional / Windows XP / Windows Vista / Windows 7 / Windows 8"	"Microsoft Windows 2000 / XP / Windows Vista / Windows 7 / Windows 8 / Mac OS X 10.4.X - 10.8.X"	Windows® XP, Windows Vista®, Mac OS X 10.1-10.5, Mac: 10.3.9-10.4.10	Windows® XP SP3 or higher, Windows Vista®, Windows® 7, Windows® 8, Windows Server® 2003, Windows Server® 2008/2008 R2 Mac OS X 10.5.8 - 10.8.X	Windows® XP, Windows Vista®, Windows® XP Home/Professional, Windows®2000, Windows Server® 2012, Windows Server® 2008 R2, Windows Server® 2008, Windows Server® 2003
Dimensions (mm)	156 x 111 x 57mm	110 mm(W) x 59 mm(D) x 207 mm(H)	165 mm(W) x 155 mm(D) x 66 mm(H)	164 x 215.6 x 57.5mm	177.0 x 237.5 x 70.4mm	134 x 235 x 78mm	67 x 188 x 111mm	116 x 192.7 x 140mm	128 x 221 x 153mm	128 x 236 x 153 mm	170 x 220 x 147.5mm
Weight (g)	250g	390g	490g	565.5g	880g	610g	570g	1.57kg	1.12kg	1.2kg	1.73kg

*available only for certain types of barcode

Solusi Membuat Label

Memberi tanda pada sebuah benda akan terlihat sangat mudah jika benda yang akan kita tandai hanya dalam jumlah kecil. Tetapi akan menjadi sulit, jika barang yang akan diberi tanda dalam jumlah banyak dan berbeda-beda.

Brother memperkenalkan Electronic labellers. Ide awalnya sangat sederhana: sebuah alat yang dapat diandalkan, mudah dibawa dan mudah digunakan untuk menghasilkan label yang tahan lama.

3 Langkah Mudah Membuat Label



Aplikasi Label P-Touch

