

P-touch 2100

Brother P-touch labels have been subjected to a series of rigorous tests which prove that even when they're exposed to extreme conditions our labels have been designed to last.

Laminated

**Laminated** – our unique laminated tape technology ensures that a layer of super-clear polyethylene laminate protects your text.

Temperature Resistant

**Temperature Resistant** – P-touch labels can withstand extreme temperatures, from -80°C to 150°C.

Strong Adhesion

**Strong Adhesion** – specially developed adhesive means P-touch labels will stay firmly affixed to a wide range of surfaces.

Abrasion Resistant

**Abrasion Resistant** – In the P-touch abrasion test using a 1kg sanding device, lettering remained completely intact, only the protective layer was slightly scratched.

Chemical Resistant

**Chemical Resistant** – after being submerged for 2 hours in a variety of chemical substances, no change in appearance or structure of P-touch labels occurred and the labels remained affixed.

Water Resistant

**Water Resistant** – after submersion in water over a long period, the tape structure and adhesive strength of P-touch labels remained unchanged.

Fade Resistant

**Fade Resistant** – after a year in a simulated sunny climate P-touch labels showed very little change visible to the naked eye.

Easy Peel

**Easy Peel** – enables convenient removal of the tape backing before applying the label.

P-touch 2100

Why do Brother P-touch labels last longer ?

Unlike ordinary labels, Brother's patented laminated tape technology ensures that a layer of super clear polyethylene laminate protects your text. Our laminated tapes consist of six layers of materials, resulting in a thin, extremely strong label.

Characters formed with thermal transfer ink are actually printed on the underside of the laminate and sandwiched between layers of PET (polyester film). This lets you create characters that are virtually indestructible on labels that stand the test of time.

Brother Laminated Tape Construction

Tape Widths

Contact:

Brother International (Aust) Pty Ltd

Web-site: [www.brother.com.au](http://www.brother.com.au) Technical Help Web-site: <http://solutions.brother.com>  
**NSW/ACT** 7 Khartoum Rd. North Ryde NSW 2113 Phone: (02) 9887 4344 Fax: (02) 9870 7234  
**VIC** 1/733 Whitehorse Rd. Mont Albert VIC 3127 Phone: (03) 9899 4844 Fax: (03) 9899 4833  
**QLD/NT** 245 Riverside Drive. West End QLD 4101 Phone: (07) 3255 1211 Fax: (07) 3255 1911  
**SA/TAS** Unit 4, 13 King William Rd. Unley SA 5061 Phone: (08) 8272 1300 Fax: (08) 8272 1199  
**WA** 117 Great Eastern Highway. Belmont WA 6104 Phone: (08) 9478 1955 Fax: (08) 9277 2177

All specifications subject to change without notice

brother At your side

P-touch 2100

Professional Labelling Solution with PC connection

Brother P-touch 2100

P-touch 2100

Technical Information

Hardware

Housing Dimensions	177 mm (W) x 232 mm (D) x 68 mm (H)
Housing Weight	820g (without batteries)
Housing Design	Desktop
Housing Colour	Silver & Black
Keyboard	QWERTY
Number of Keys	65
Cutter	Automatic
Power	AA Alkaline Batteries x 6 or AC Adaptor (Model AD-24 included)
LCD	16 chr x 3 line (Graphical display), 128 dots x 48 dots
Included Items	User Guide, Software Installation Guide (Windows), CD-ROM- Printer driver, P-touch Editor 4.2 (Windows), P-touch Quick Editor 2.0 (Windows)
Tape Type	TZ-tape
Tape Size	3.5 / 6 / 9 / 12 / 18 mm
Print Head	180 dpi
Print Speed	10mm / sec.

Built-In Software

Fonts	4 fonts (Helsinki, Brussels, Florida, Calgary)
Built in Languages	English, French, German, Dutch, Italian, Spanish, Portuguese, Danish, Swedish, Norwegian, Finnish, Hungarian, Czech, Polish
Characters & Symbols	393
Max. Print Height	15.8 mm
Max. Character Height	14.8mm
Memory Size	1800 characters (maximum 9 locations)
Multi - Line	5 lines
Type Style	Normal/Bold/Outline/Shadow/Solid/Italic/Italic Bold/Italic Outline/Italic Shadow/Italic Solid
Framing & Fill Pattern	15 Frames / 1 Fill Pattern
Underline	Yes
Strikeout	Yes
Tape Margin Settings	Small/Large/Chain Printing/No Cut
Barcode Protocols	CODE39, CODE128, EAN8, EAN13, EAN128, UPC-A, UPC-E, I-2/5(ITF), CODABAR
Copy Printing	1 - 9
Mirror Printing	Yes
Vertical Printing	Yes
Numbering	1 - 9
Auto Power Off	Yes
Function Menu	Yes

Minimum System Requirements (for computer connection)

Interface	USB 1.1 or 2.0
Operating System	Microsoft® Windows® 2000 Professional / XP / Vista
Memory	Microsoft® Windows® 2000 Professional / XP: 128Mb or more Microsoft® Windows® Vista: 512Mb or more
Hard Disk Space	70Mb or more
Display	SVGA High colour graphics support or higher

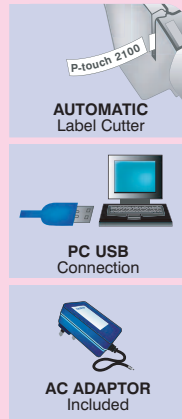
Always at your side

# P-touch 2100



## P-touch 2100 Features

- Large 15.8mm print height
- Print preview on LCD display
- 393 characters and symbols
- 1800 character memory
- 4 fonts
- 10 different type styles
- 15 Frame styles
- PC interface built-in
- Prints up to 5 lines
- Raised keys for easier input
- Includes 12mm starter tape and adaptor



## The PT-2100 – your perfect office companion!



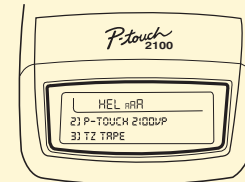
Most busy offices and work places have a variety of items and equipment that would benefit from clear labelling, such as CD/DVD cases, files and shelves. These could all be quickly and easily identified by using the Brother P-touch 2100 labeller. Replace hard to read, hand written notes with bright colourful labels that are easy to read and so durable they will last for many years.

**It's simple!** Switch on, type your label text and press print, then simply peel the label and stick it on. It takes just seconds. Be **creative** and add some symbols, or use shadow to give your text a 3D effect! You can put a frame around your text for even more definition, or add a barcode. You can print as many copies of your label as you like, each one will be individually cut automatically. All this and more is possible with the P-touch 2100.

**Large print height –**  
Large print height and up to 5 lines of text

**P-touch**

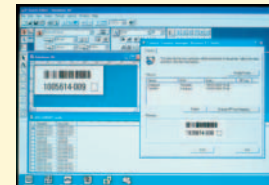
**Large LCD –**  
3 line LCD, easy to read graphical display



**Print symbols and barcodes –**  
Print symbols and barcodes



**Barcodes –**  
Access the most popular barcodes built into the machine and even more through P-touch editor software.



**Auto-Cutter –**  
Increases efficiency and keeps tape wastage to a minimum making it ideal for printing large volumes of labels.



**PC Connectivity –**  
Connect easily to your PC and create labels with your special requirements using Brothers superior P-touch Editor software.



## Wide Range of Tapes

TZ tapes are available in a large range of colours and widths. Standard tape length is 8m providing approximately 100 labels (based on 10 characters and standard label length of 8cm). For full tape line up see TZ tape catalogue.



Within the TZ tape range we also offer special tapes, including:

**Strong Adhesive Tape -** Gives improved adhesion for those even more demanding applications and environments.

**Tamper Evident Tape -** Designed to leave a checker-board pattern as an indicator that the tape has been removed.

**Iron-On Fabric Tape -** Produces washable cloth labels ideal for labelling uniforms, work wear, bedding and table cloths.

**Flexi ID Tape -** Ideal for cylindrical surfaces and flagging cables.

