



Compact Label Maker with Wireless Enabled Printing

Quickly create a wide variety of professional labels using a full-sized computer monitor and keyboard. Great for individual label printing, but particularly well-suited to multi-label creation jobs thanks to print speeds of up to 30mm per second.

- Share a single printer within a workgroup
- Compatible with Windows and Mac
- Print directly from your mobile device
- Easy to integrate with custom apps
- Near Field Communication (NFC)



P-Touch Laminated Labels Designed To Last

Brother P-touch laminated TZe tapes consist of seven layers of materials, resulting in a thin yet extremely strong label. The thermal transfer ink is sandwiched between two protective layers of PET (polyester film), which protects the text against the effects of liquids, abrasion, temperature, chemicals and sunlight. As the labels have been tested to the extreme, you can be confident of a professional quality label that has been designed to last.



Water Resistant



Temperature Resistant



Abrasion Resistant



Fade Resistant



Chemical Resistant



Laminated



Easy Peel



Strong Adhesion

PT-P750w features flexible connectivity options, making it the ideal choice for single or multi-user working environments.

The PT-P750W is a powerful, yet easy-to-use label maker that enables multiple users to connect via a wireless network, print from compatible Apple® iOS and Android mobile devices, or connect it via the included USB cable to nearly any computer in the office. It enables users on a wireless network to quickly create a wide variety of professional labels using a full-sized computer monitor and keyboard. Its great for individual label printing, but particularly well-suited to multi-label creation jobs thanks to print speeds up to 30mm per second, repeat printing capability, and an automatic half or full cutter to help save time.



Flexible Connectivity

Multiple users can connect to the PT-P750w via a wireless 802.11b/g/n network or connect it via the included USB cable.



Mobile Device Printing

Install the free Brother iPrint&Label app on your compatible Apple iOS or Android mobile device.



Great for Developers

Operates on an open-source development platform, its easy for app developers to integrate label printing into their iOS and Android applications.



Pre-loaded Software

Includes pre-loaded labeling software that allows you to simply attach via USB to a PC or Mac computer and immediately begin.



Super-fast Printing

The PT-P750W offers super-fast print speeds of up to 30mm per second.



Expanded Design Options

Expand the capabilities of the PT-P750W by using the compatible P-touch Editor Label Design Software, available for free.



Other Features



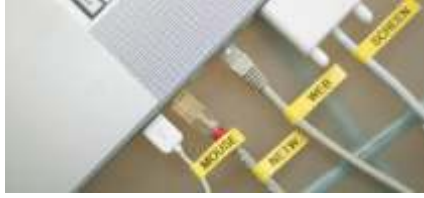
Multiple Power Options

Use the included AC cable or 6 AA batteries⁷ to power the unit for use at a desk⁵, or make it truly portable by running it on a rechargeable Li-ion battery.

PT-P750W

Help organise your workplace with clear, high quality, durable labels, office stationery, archive folders, company assets, shelving, parts labelling and custom signage are just some of the many applications.

Whether you need one or a hundred labels at a time, a Brother P-touch PT-P750W will help ensure your day-to-day work runs as efficiently as you need it to. And with the wide variety of tape widths and colours available you're sure to find one suitable for your needs.



Label to organize and identify



Label to look professional



Label to protect your assets

Technical Specifications

Hardware

Maximum Tape Width	24mm
Built-in Memory	No
Tape Cutter	Automatic (Half and Full)
Maximum Print Speed	20mm/sec. (using rechargeable Li-ion battery ⁷)
Maximum Print Resolution	30mm/sec. (using including AC Power Adapter)
Maximum Print Height	180 dpi (Max 180x360 dpi)
Power Source	18.0 mm
Interface	AC Power Adapter (included)
ENERGY STAR® Qualified	Rechargeable, Li-ion battery (optional)
	6 x AA Batteries (optional)
	USB, Wireless (802.11 b/g/n), NFC ³ , Wireless Direct
	Yes

Software Features

Built-in Software	P-touch Editor Lite (Windows/Mac)
Number of Fonts	Uses all TrueType Fonts
Number of Font Styles	Uses all TrueType Fonts
Number of Font Sizes	Scalable
Maximum Print Lines	Variable
Number of Symbols	Uses all TrueType Symbols
Number of Frames	10 ⁹ /126 ¹¹
Auto Numbering	1-200, A-Z, a-z ⁸ /1-5000, A-Z, a-z ¹¹
Repeat Printing	Up to 200 copies ⁹ / up to 5000 copies ¹¹
Vertical Printing	Yes
Mirror Printing	Yes
Auto Formats	12 categories (or more) ¹¹
Download Templates from the Cloud into P-touch Editor	Yes ^{10,11}
Supports Barcode Printing	Yes ¹¹

Supports Database Printing	Yes ¹¹
Operating Systems	Windows Vista®, Windows® 7, Windows® 8/8.1, Windows Server® 2008/2008 R2, Microsoft® Windows Server® 2012/2012 R2 Mac OS X v.10.7.5, 10.8.x, 10.9.x.

Mobile Device Printing

Supports NFC Touch to Connect ³	Yes
Supports Mobile Device Printing	Yes (iPrint&Label)
Software Development Kit (SDK) Available	Yes (Windows®, iOS®, and Android)

Carton Contents

PT-P750W Label Printer
Black on White Standard Laminated TZe Starter Tape 24mm (4m long)
AC Power Adapter
USB Cable
Users Guide

Accessories

AD-E001 AC Power Adapter (included)
BA-E001 Rechargeable Li-ion Battery Pack (optional)

⁹ Using P-touch Editor Lite

1. Requires connection to a wireless network, as well as Brother Print&Label free app download for wireless printing from your Apple iOS or Android mobile device.

2. Compatible with Windows 8/8.1, Windows 7, Windows Vista, Windows Server 2008/2008 R2, Windows Server 2012/2012 R2, and Mac OS X v10.7.5, 10.8.x, 10.9.x. All design software and drivers available for free download at support.brother.com.

3. See brother-usa.com/info for a list of compatible mobile devices.

4. Software Development Kits (SDKs) available for Windows, iOS, and Android systems.

5. Mobile printing not supported when using AA batteries.

6. Using AC adapter

7. Sold separately

8. Windows/Mac software and drivers available as a free download.

9. Database printing for Windows only.

10. Internet connection required.

11. Requires installation of full version of P-touch Editor software. Windows®/Mac software and drivers available as a free download.



Contact :

brother
at your side



Brother International (India) Pvt. Ltd.

Unit No.111, 1st Floor, C-Wing, 215, Atrium, Andheri-Kurla Road, Andheri (East), Mumbai - 400059. Email:info@brother.in
Toll Free No. 1800 222 422 (MTNL & BSNL) 1800 209 8904
(Other Landline and Mobile Customers)
Opening hours : 8:30 am to 5:30 pm (Mon. to Fri.), 9:00 am to 4:00 pm (Sat.)
Closed on Sunday and Public Holidays.
www.brother.in